

Sustainability & Environmental Protection

SUSTAINABILITY POLICY

Sustainability is the capability to equitably meet the vital human needs of the present without compromising the ability of future generations to meet their own needs by preserving and protecting the area's ecosystems and natural resources. The concept of sustainability describes a condition in which human use of natural resources, required for the continuation of life, is in balance with Nature's ability to replenish them.

SIEM Ship Management fully recognizes the importance of sustainability in developing and strengthening our mission. We are committed to maintaining the highest standards of administrative and ethical standards, and fully comply with the key principles of sustainable development which include integrity, management, and transparency.

Social sustainability

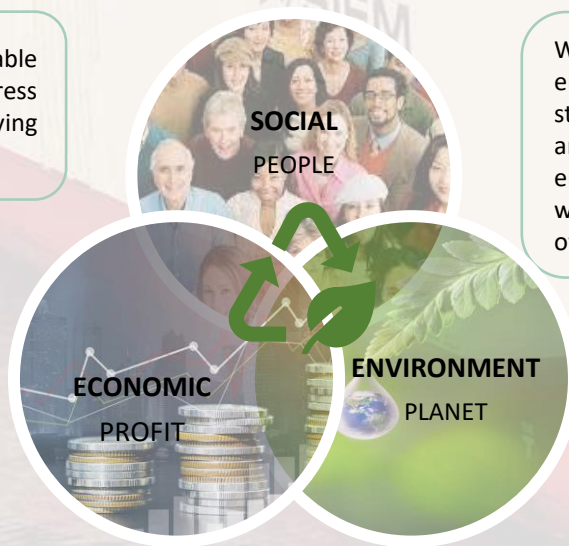
Where we act as a responsible employer and contribute to the improvement of social progress in the area in which we operate.

Economic sustainability

Where we strive for stable and profitable progress over time and applying good business practices.

Environmental sustainability

Where we protect the environment by actively striving to reduce our own and our customers' environmental impact, as well as optimizing the use of resources.



SIEM SUSTAINABLE BUSINESS

ENVIRONMENTAL PROTECTION & ENERGY CONSERVATION POLICY

Shipping business is strongly related to marine environment and may pose significant risk of sea pollution. At the same time changing climate conditions may affect our business in a negative way. Therefore, it is the SIEM Ship Management policy to provide quality services and at the same time minimize risks that could harm the environment by preventing pollution, preserving resources and improving energy efficiency.

PESTLE Analysis

PESTLE analysis used by SIEM as a tool to track the environment in which we operate or when we plan to launch a new project or service. This analysis not only defines what the SIEM should do, but also considers the SIEM goals and related strategies.



ISO environmental protection certifications

SIEM has recently been awarded the latest ISO environmental certifications:

- ✓ **ISO 14001:2015** - Environmental management standards
- ✓ **ISO 50001:2018** - Energy management standards



The North American Marine Environment Protection Association (NAMEPA)

SIEM cooperates with NAMEPA and is certified by this organization. NAMEPA Certificate is the highest achievement in the field of Environmental Protection and Sustainable Development, we can say that we are in the group of the best of the best.



The Clean Shipping Index

The Clean Shipping Index (CSI) is a non-profit organization offering a voluntary environmental label for ships and shipping companies and providing market incentives for clean shipping. Siem Ship Management is a part of this exclusive, eco friendly group of associates.



World Wildlife Found –WWF

WWF saves the most valuable natural places in over 100 countries on 6 continents. We supports this organization. SIEM Ship Management has adopted the Baltic porpoise and is its virtual guardian. **Even small actions create the future...**



Marpol Compliance Programme – MCP

The unique MARPOL Compliance Programme has been implemented only in the SIEM fleet. The aim of this program is to mobilize both ship crews and managers to implement additional environmental protection activities beyond the scope of the MARPOL Convention.



SIEM Shipping Code of Conduct

Throughout Siem Shipping we aim to consistently improve the standard at which we work. These expectations are presented in the Siem Shipping Code of Conduct, defining our role in upholding these standards.



EVISA Green Ports Workshop

SIEM Ship Management participated in EVISA Green Ports Workshop. In the EVISA project, the Water, Energy and Environmental Engineering research unit has developed tools for ports, which can be used to improve energy usage and efficiency, but also to define the current emission levels and what can be done with them.



BSR's Clean Cargo Working Group

Cooperation with the BSR Clean Cargo Working Group (CCWG), which is a leading global initiative of carriers and shippers to improve environmental performance in maritime transport.



SIEM ENVIRONMENTAL SOLUTIONS



Dual – fuel propulsion used on SIEM ships

Two SIEM vessels - SIEM CONFUCIUS and SIEM ARISTOTLE are the first overseas car freighters in the world to be powered by clean burning liquefied natural gas (LNG) what will contribute significantly towards its 'go-TO-zero' emissions strategy.



Dual – fuel propulsion. Shippax Deep-Sea Ro-Ro Environmental Award

SIEM CONFUCIUS is a winner of the Shippax Deep-Sea Ro-Ro Environmental Award 2021. She has pioneered the use of LNG to reduce the carbon and environmental footprint in the automotive logistics chain.



Exhaust Gas Cleaning Technology

Scrubbers, or the technical term, exhaust gas cleaning systems (EGCS), or SOx scrubbers, are used to remove harmful elements from the exhaust gas. The fitting of a scrubber on the SIEM CICERO significantly reduced the sulphur content of the ship's exhaust gases.



Use of composite structures for ship construction

SIEM CICERO has GRP composite structures on three cargo decks. Key benefits include reduced fuel consumption, increased payload and reduced production lead times. As a result, SIEM CICERO won the JEC Innovation Award 2018.



The Energy Efficiency eXisting Vessels Index (EEI)

EEI is a measure introduced by the IMO to reduce the greenhouse gas emissions of ships. EEI (Energy Efficiency Existing Vessels Index) are continually monitored/ verified on board of SIEM Ship Management vessels.



Sulphur Oxide (SOX) emissions

Reduction of Sulphur emissions on the Baltic and North Sea, switching to a new low-Sulphur fuel.



Inventory of Hazardous Materials (IHM)

Hazardous materials are handled onboard daily, exposing crew, ships and the environment to potential risk. The SIEM fleet has identified hazardous materials and follows the IHM maintenance procedure for the ongoing control and verification of all materials that reach our ships.



Ballast Water Treatment Systems (BWTS)

SIEM Ship Management has successfully installed Ballast Water Treatment Systems (BWTS) on its ships while meeting its obligations under the IMO Convention on Ballast Water Management (BWM).



Grim vane wheel

The grim wheel is a free turning propeller mounted after the main propeller. It uses the rotational energy of the main prop wash. It increases efficiency by 5%. This solution is used on two of our ships – SIEM CURIE and SIEM COPERNICUS.

BENEFITS OF BECOMING OF SUSTAINABLE BUSINESS

- Better brand image and competitive advantage.
- Increasing productivity and reducing costs.
- Increasing business ability to comply with regulations.
- Attracting employees and investors.
- Waste reduction.
- Making shareholders happy.



