

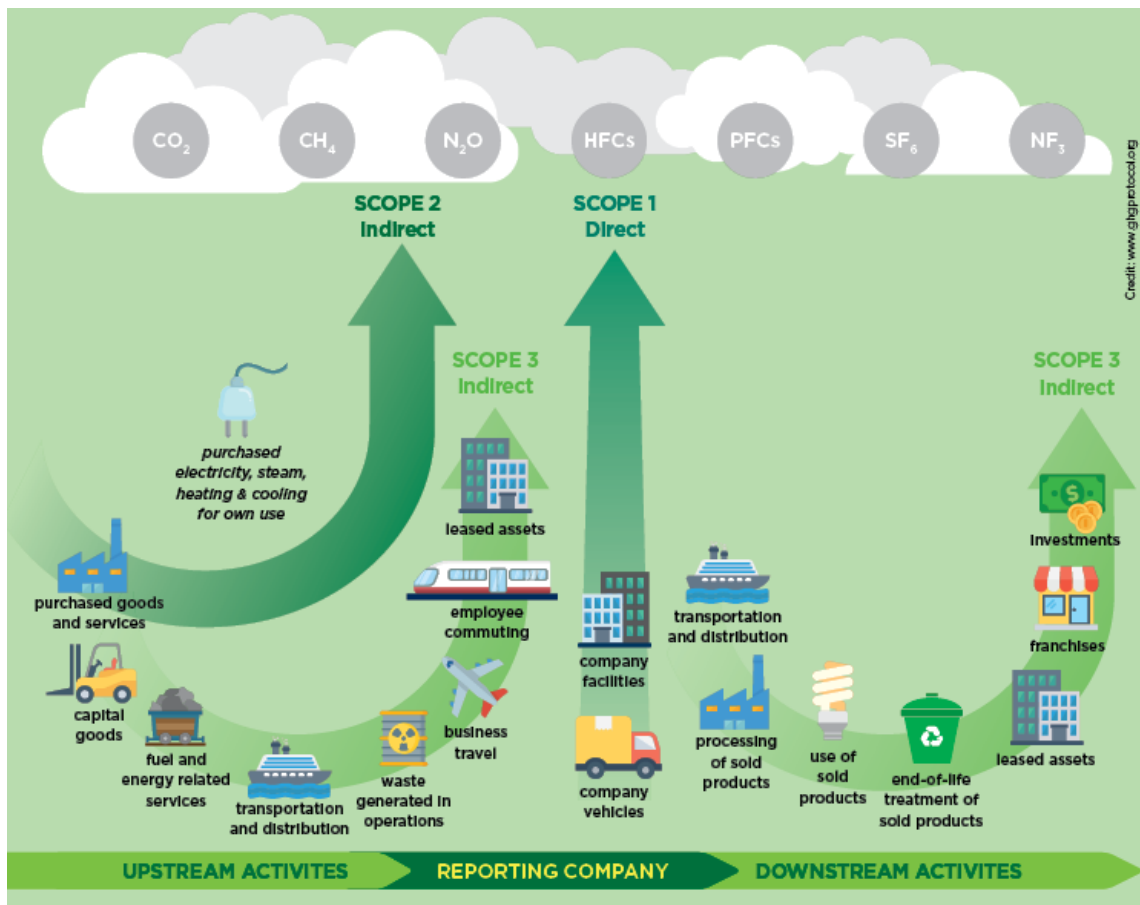
Scopes of Emissions

Emissions are broken down into three categories by the Greenhouse Gas Protocol in order to better understand the source:

Scope 1 – All Direct Emissions from the activities of a company/organization or under their control. Including fuel combustion on site such as gas boilers, fleet vehicles and air-conditioning leaks.

Scope 2 – Indirect Emissions from services purchased from 3rd parties such as electricity purchased and similar, used by the company/organization. Emissions are created during the production of the energy/services and eventually used by the company/organization.

Scope 3 – All Other Indirect Emissions from activities of the company/organization, occurring from sources that they do not own or control. These are usually the greatest share of the carbon footprint, covering emissions associated with business travel, procurement, transportation and distribution of goods, waste management and water.



Summary

Scope 1 – Company owned facilities and vehicles

Scope 2 – Electricity, Heating and Steam

Scope 3 – Employee commuting, air travel, transportation and distribution of goods and waste management